

# Nationwide Health Information Network “NwHIN”

*Presenter:*

Christina Palumbo

Adapter/VistAWeb IT Project Manager

July 21, 2011



# NwHIN Contents

• 2009 Mandate by the President.....	3
• How does NwHIN support VLER.....	4
• What is NwHIN.....,,,	5
• What is NwHIN cont.....	6
• NwHIN Architecture: Adapter, VAP and VistAWeb.....	7
• NwHIN Architecture: Direct.....	8
• NwHIN Current State.....	9
• Who will use NwHIN.....	10
• NwHIN Process.....	11
• VLER Capability Areas Map.....	12
• NwHIN Workstream.....	13
• Program Governance.....	14
• NwHIN Program Office.....	15

## The President's direction forms the basis for VLER



“The DOD and VA will work together to define and build a system that will ultimately contain administrative and medical information from the day an individual enters military service throughout their military career, and after they leave the military.”

President Barack Obama

April 09, 2009



# How does NwHIN support VLER?

The Nationwide Health Information Network (NwHIN) Program strives to advance the direct exchange of health information between federal agencies and non-federal entities thereby supporting quality and efficient health care, as required by Executive Order 13410 “Promoting Quality and Efficient Health Care in Federal Government Administered or Sponsored Health Care Programs”, Towards the end, the NwHIN Program exists to ensure the success of its underlying projects, each of which is responsible for the development of functionality critical to the Program’s mission.

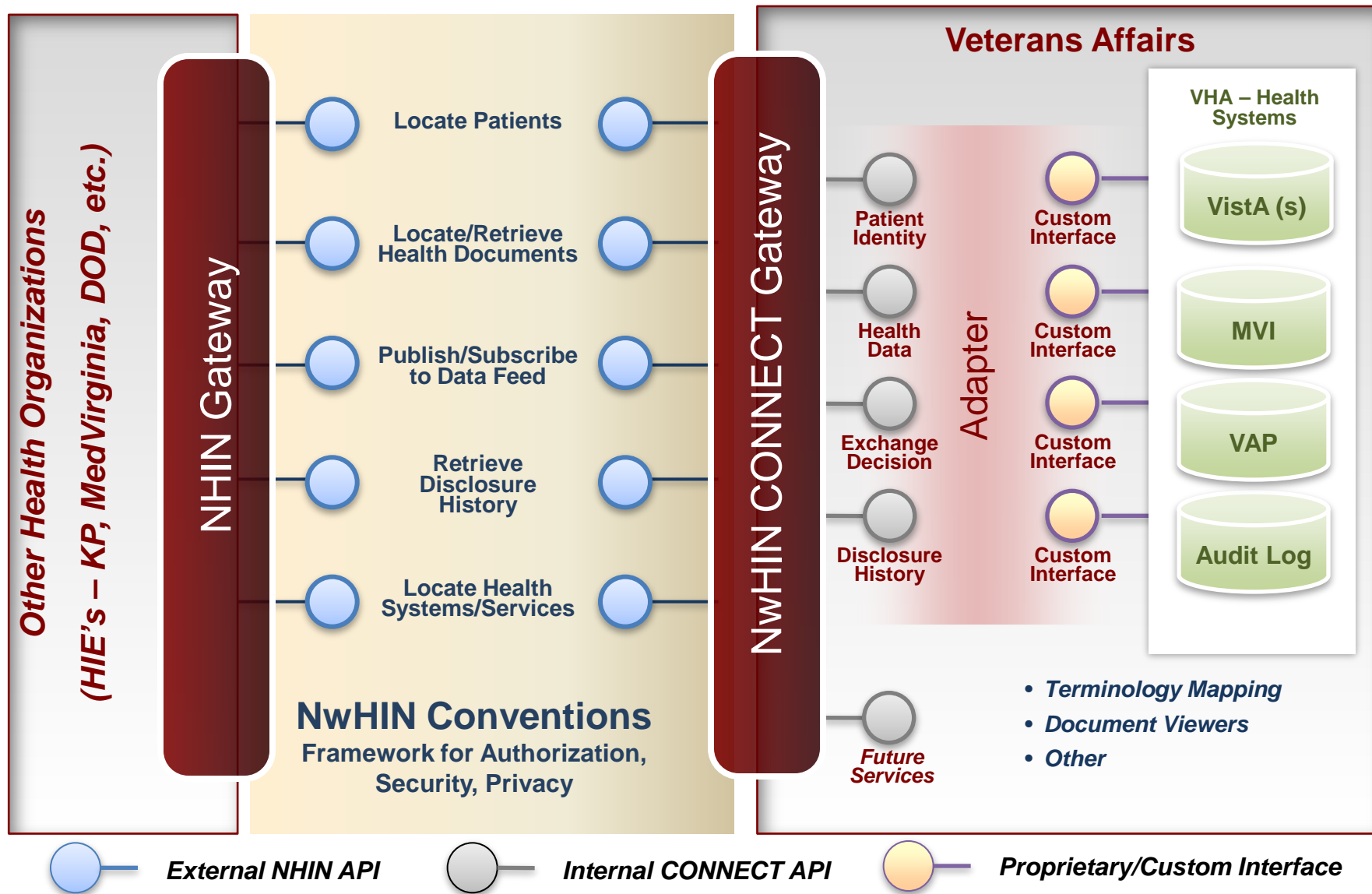
# What is NwHIN?

- A Network of Networks
- A set of standards, services and policies that enables secure health information exchange over the Internet



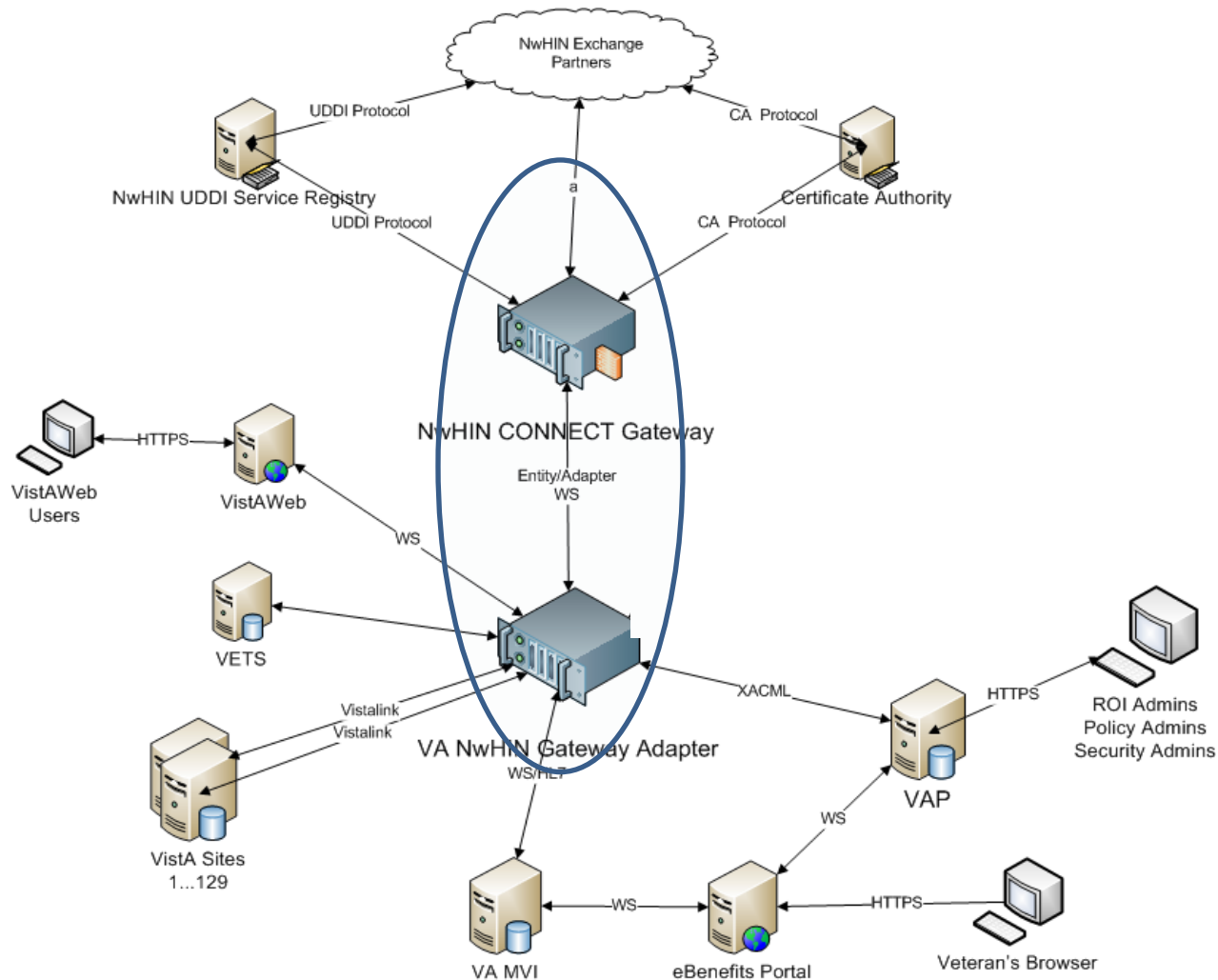


# WHAT IS NWHIN



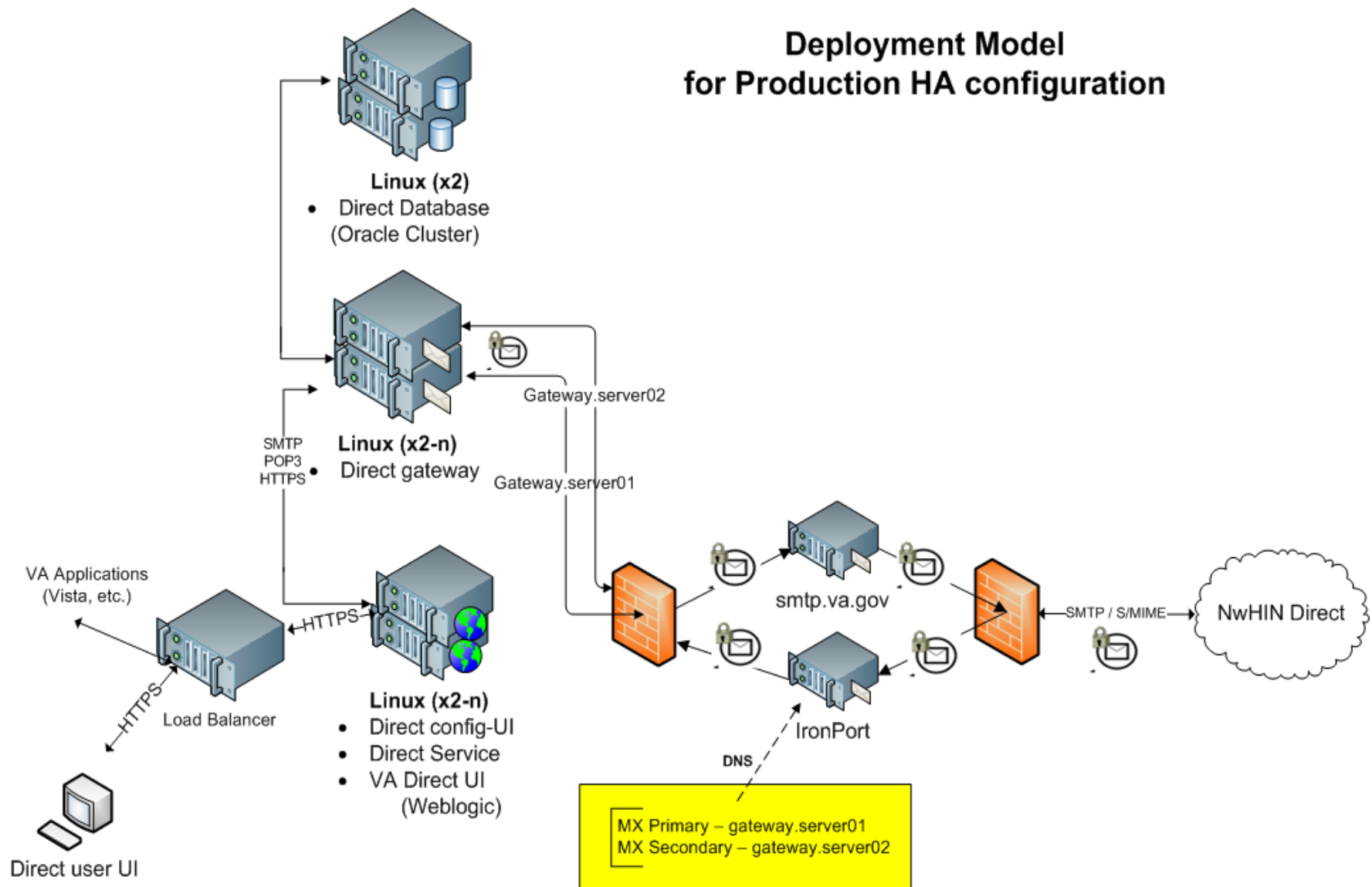
# NwHIN ARCHITECTURE: ADAPTER, VAP AND VISTAWEB

## High Level Architecture



# NwHIN Architecture: Direct

## Deployment Model for Production HA configuration





# NWHIN CURRENT STATE

## ☐ Data Domains

1. Person Demographics
2. Support/Contact Info (Emergency, NOK)
3. Allergies
4. Problems
5. Medications (Outpatient, Self-Reported)
6. Outpatient Pharmacy
7. Vital Signs
8. Labs – Chemistry and Hematology
9. Immunizations
10. List of Encounters (Outpatient)
11. List of Procedures (Surgery, Radiology)
12. Information Source
13. Consults and Referrals (Sept 2011)
14. Discharge Summaries (Sept 2011)
15. Procedure Notes (Sept 2011)
16. Histories and Physicals (Sept 2011)
17. Results of Diagnostic Studies (Sept 2011)

## ☐ External Partners

1. DOD
2. San Diego KAISER PERMANENTE
3. MED VIRGINIA
4. ASHVILLE
5. SPOKANE
6. INDIANAPOLIS, INDIANA (Sept)
7. PUGET SOUND , WASHINGTON (Sept)
8. Rural Utah (Sept)
9. Site #9 (Sept)
10. Site #10 (Sept)
11. Site #11 (Sept)

## ☐ User Interfaces

1. VistAWeb
2. eBenefits
3. Adapter CPP Web Page

## ☐ Data Protocols

1. TCP/IP
2. HTTP(S)
3. O/JDBC, JMS, RMI (EJB)
4. Web Services
5. VistALink/RPC

## ☐ Services Used

1. VistA RPCs
2. VA MVI
3. VAP (Nov 2011)
4. VETS (Sept 2011)

## ☐ Data Standards

1. Continuity of Care (CCD):
  - >C32-Patient Summary Record
  - > C62-Clinical Notes (Sept 2011)
2. IHE XCA
3. RxNORM, LOINC, SNOMED, ICD-9, CPT (VETS Translation in Sept)

# Who will use NwHIN?

## Department of Veterans Affairs

- Veterans Health Administration
- Veterans Benefit Administration

## Department of Defense

- All four branches of the military
- United States Coast Guard

## Other Federal Partners

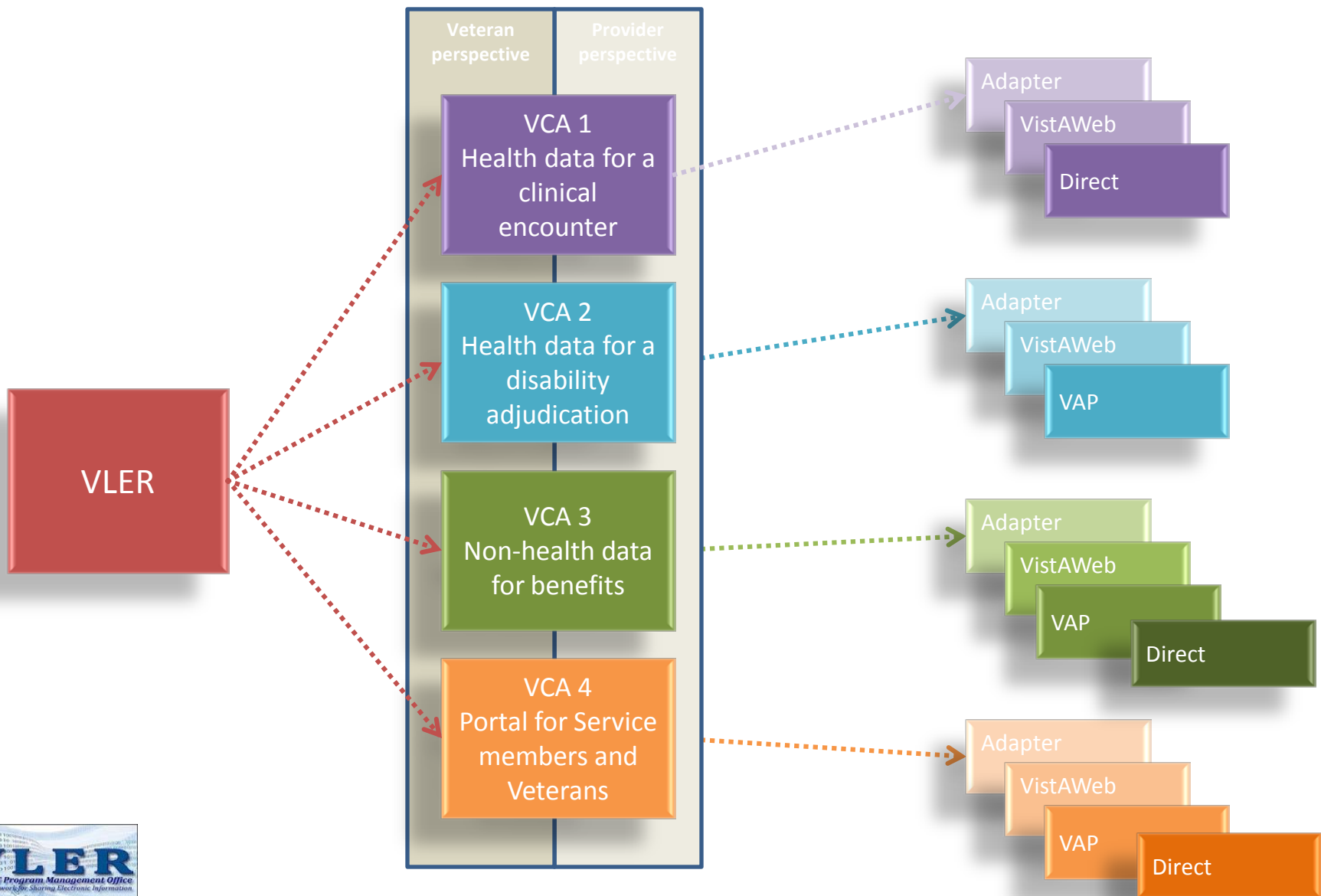
- Social Security Administration

## Private Sector

- Health Systems
- Primary Care Physicians
- Specialists

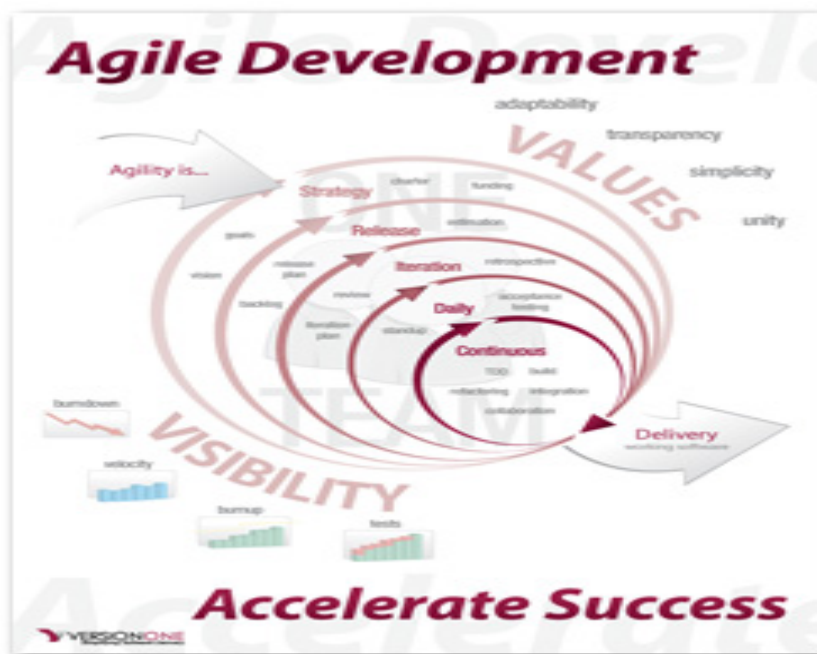
## Veterans

# VLER Capability Areas Map



# NwHIN Process

Our process is to help develop a common architecture to drive health information sharing technology. NwHIN utilizes the Agile methodology across highly integrated workstreams to create the most efficient process. The solution NwHIN provides is an integral part of the VLER initiative.



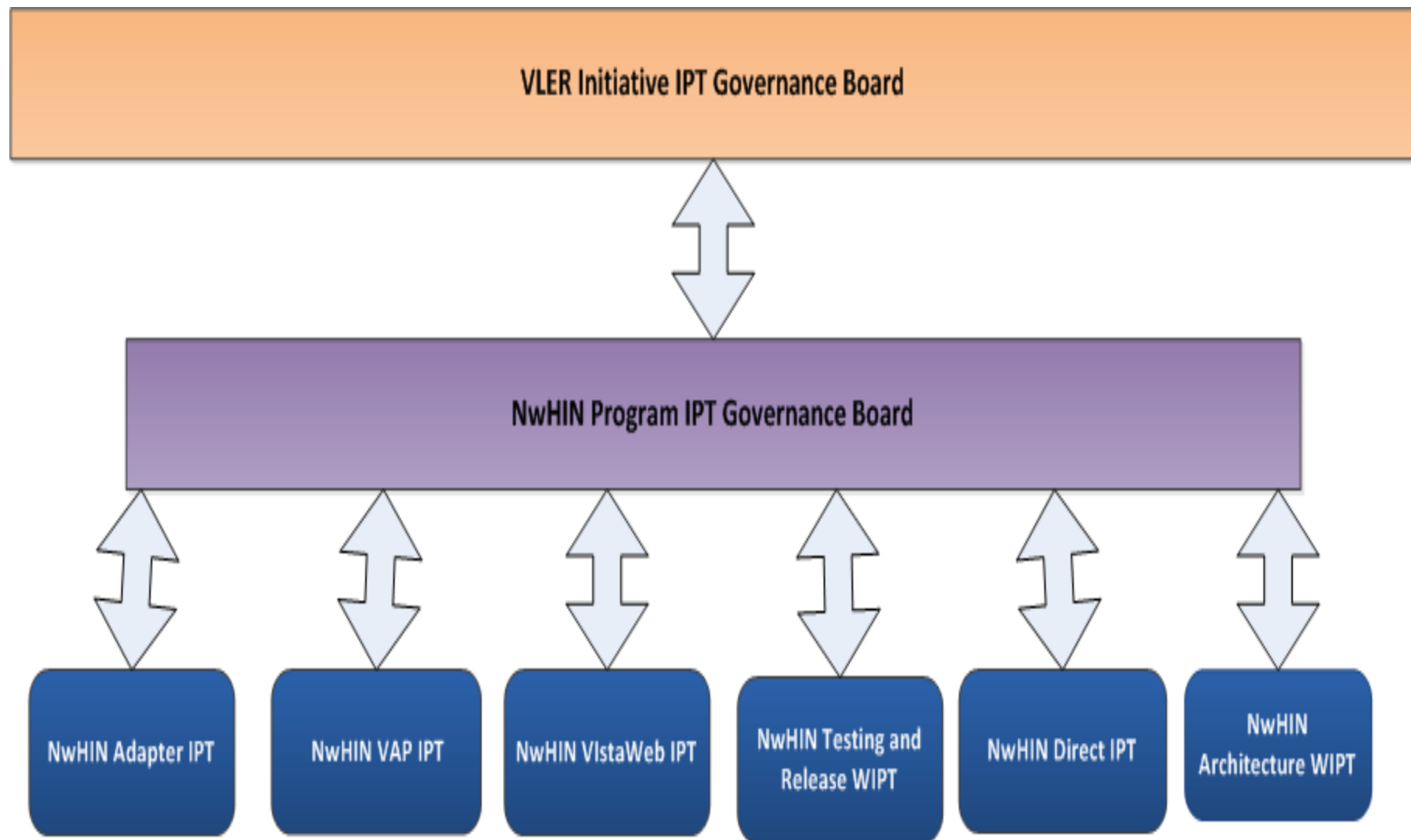


# NwHIN WORKSTREAMS

## Projects Under NwHIN Program

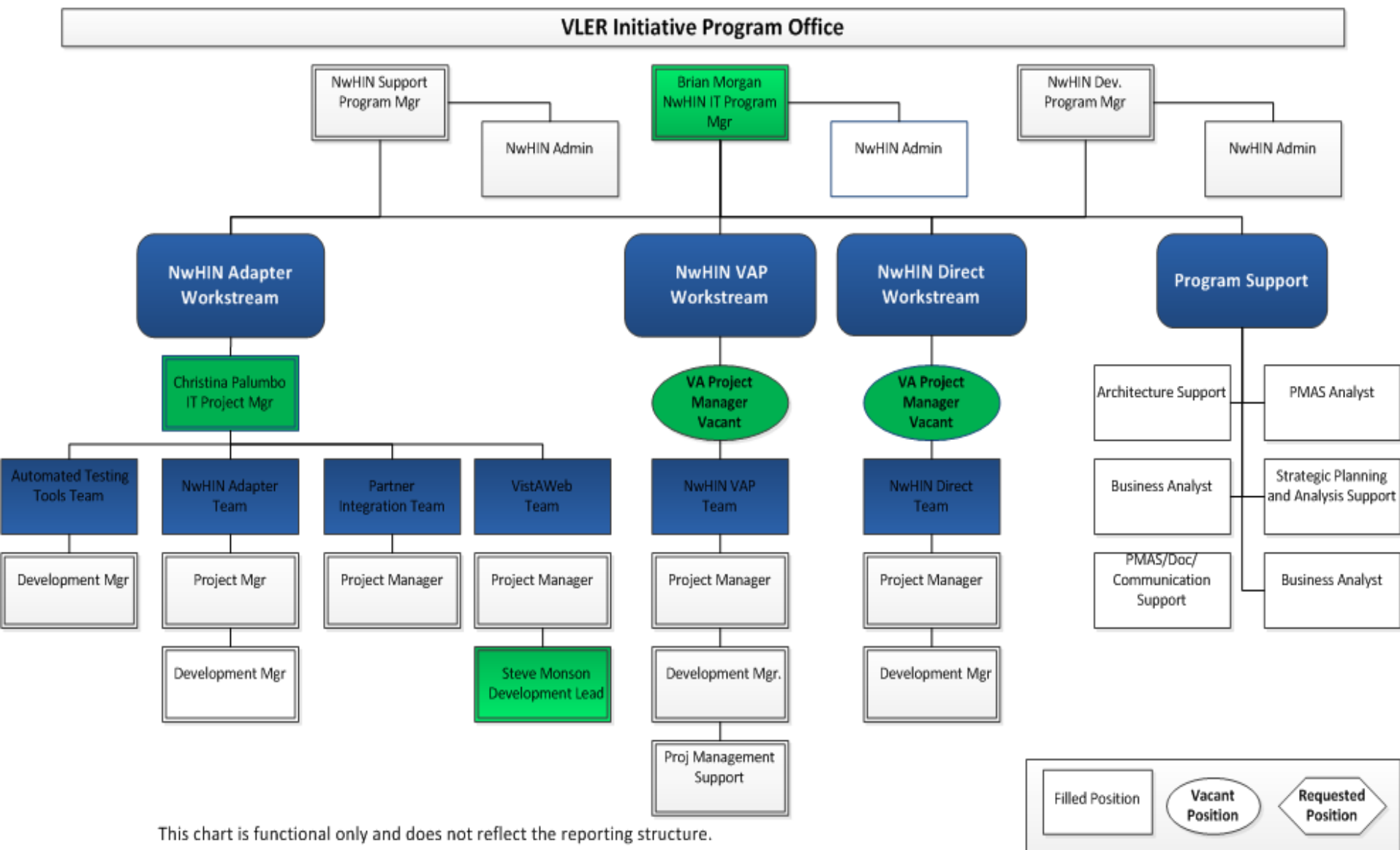
Project	Description
NwHIN Gateway/Adapter	CONNECT Gateway and VA NwHIN Adapter supports the exchange of health information with the partners.
VAP	Veterans Authorization and Preference (VAP) is a system for controlling access to health information accessible via NwHIN. This system also manages and stores the Veteran's preferences for sharing health information via NwHIN.
VistAWeb	A web based system used for displaying aggregated health information from VistA sites and NwHIN Partners. This system provides the user interface for NwHIN.
NwHIN Direct	NwHIN Direct is a system that allows VA to deliver and receive encrypted health information directly to known trusted recipients (external providers) over the Internet.
Partner Integration / Test Tools	The Automated Tools project will create tools to support the need to automate the testing of new NwHIN partners. The Partner Integration project was created with the goal of on-boarding new partners effectively and provide support in Partner Integration Testing.

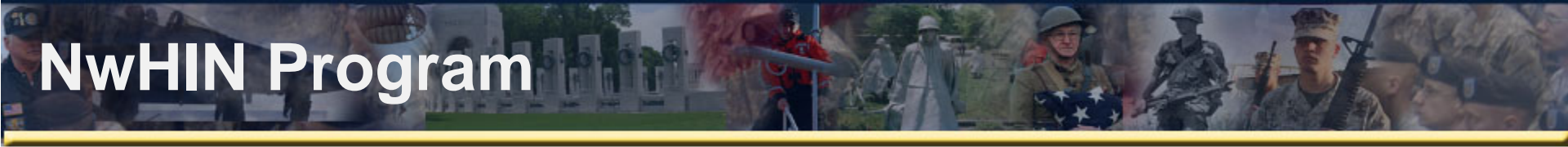
# Program Governance Structure



# NwHIN Program Management

## NwHIN Program Management Office





# Questions